

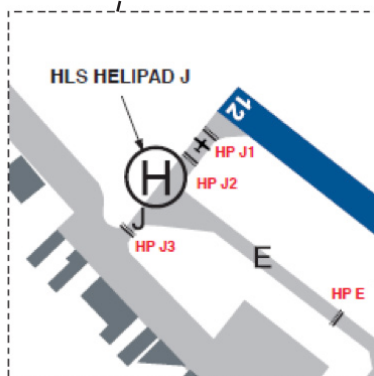
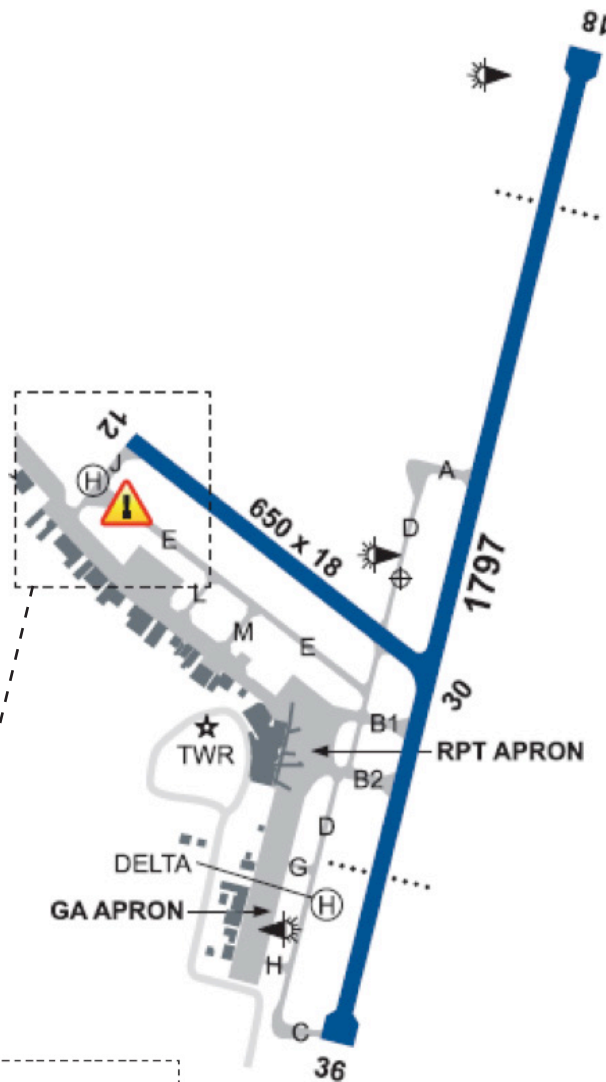


# SUNSHINE COAST HELICOPTER LANDING SITE (HLS) INCURSION HOTSPOTS



Pilots should exercise caution at these **hotspots** and on all runways:

- There are holding points on TWY's E and J associated with 'Helipad J', located at the intersection of these two TWY's
- RWY 30 is immediately adjacent to RWY 18/36. A clearance is required from air traffic control before entry
- All RWY's are active at all times and require an air traffic control (ATC) clearance to cross, enter, backtrack or takeoff
- All holding points require an ATC clearance to cross
- Holding points on TWY's may be set back a considerable distance from the associated RWY or Helicopter Landing Site (HLS)
- Do not exit a RWY unless you are following a yellow lead-in line
- Read back all ATC instructions in accordance with AIP
- Ensure you are confident of your taxi route prior to commencing or continuing taxi. If you are unsure confirm with ATC, or request 'detailed taxi guidance'.



**Holding Point J1:** Having received clearance to cross HLS (Helipad J), hold at HP J1 for clearance to enter RWY 12.

**Holding Point J2:** Vacating RWY 30, hold at HP J2 for clearance to cross HLS (Helipad J).

**Holding Point J3:** Taxiing from the Taxilane to RWY 12 or wanting to enter E via J, hold at HP J3 for clearance to cross HLS (Helipad J).

**Holding Point E:** Taxiing westbound on E, hold at HP E for clearance to cross HLS (Helipad J).

**Not for navigation.** This information is current at the time of publication. Refer to DAP, ERSAs and NOTAMS for latest Aerodrome Charts and operational information. For more information on this or other Airservices safety publications, please email: [safety.promotions@airservicesaustralia.com](mailto:safety.promotions@airservicesaustralia.com).