

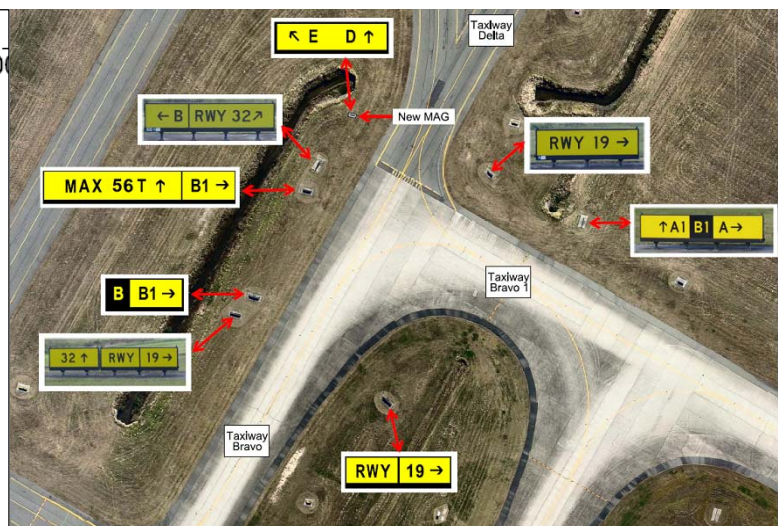
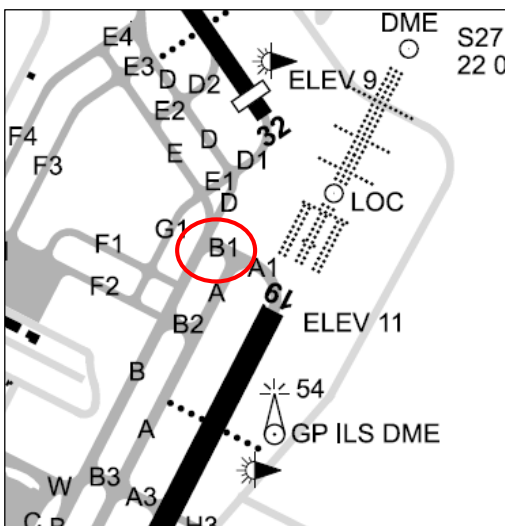
Safety Bulletin

Taxiway Confusion at Brisbane Airport

19 AUGUST 2014

At Brisbane Airport, some pilots are experiencing difficulties identifying the turn off from Taxiway B to Taxiway B1 and the Runway 19 Holding Point. This had led to several occurrences where aircraft have unintentionally failed to turn from Taxiway B and subsequently continued onto Taxiway D, above the weight restriction of 56000KG.

This Safety Bulletin has been developed to improve pilot knowledge of the confusion experienced on Taxiway B – B1 at Brisbane and reduce the likelihood of a pilot inadvertently failing to take Taxiway B1 and continuing onto Taxiway D.

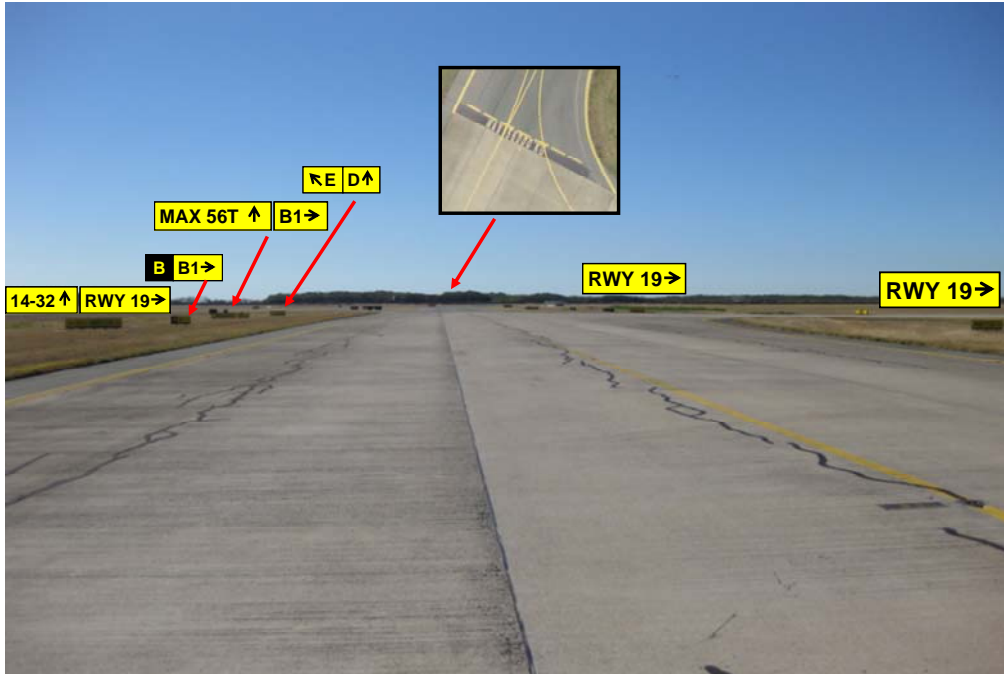


Overview of the Taxiway B - B1 intersection

In an effort to reduce pilot confusion, Brisbane Airport has completed lighting and signage upgrades at the intersection and, in conjunction with Airservices, implemented amended taxi procedures around the area of confusion. NOTAM C404 has also been issued.

Brisbane Airport Airside Operations has also produced a 'pilots-eye' video of the intersection at night, highlighting the updated lighting at the intersection and need for increased vigilance upon approaching this area.

[Video - Taxiway Confusion at Brisbane Airport](#)



View approaching Taxiway B-B1 intersection

Further information

For further information or to provide feedback or suggestions on alternative methods to improve safety at this taxiway intersection, please contact either Airservices Safety Liaison (Safety.Liaison@airservicesaustralia.com) or peter.dunlop@bne.com.au at Brisbane Airport Corporation.