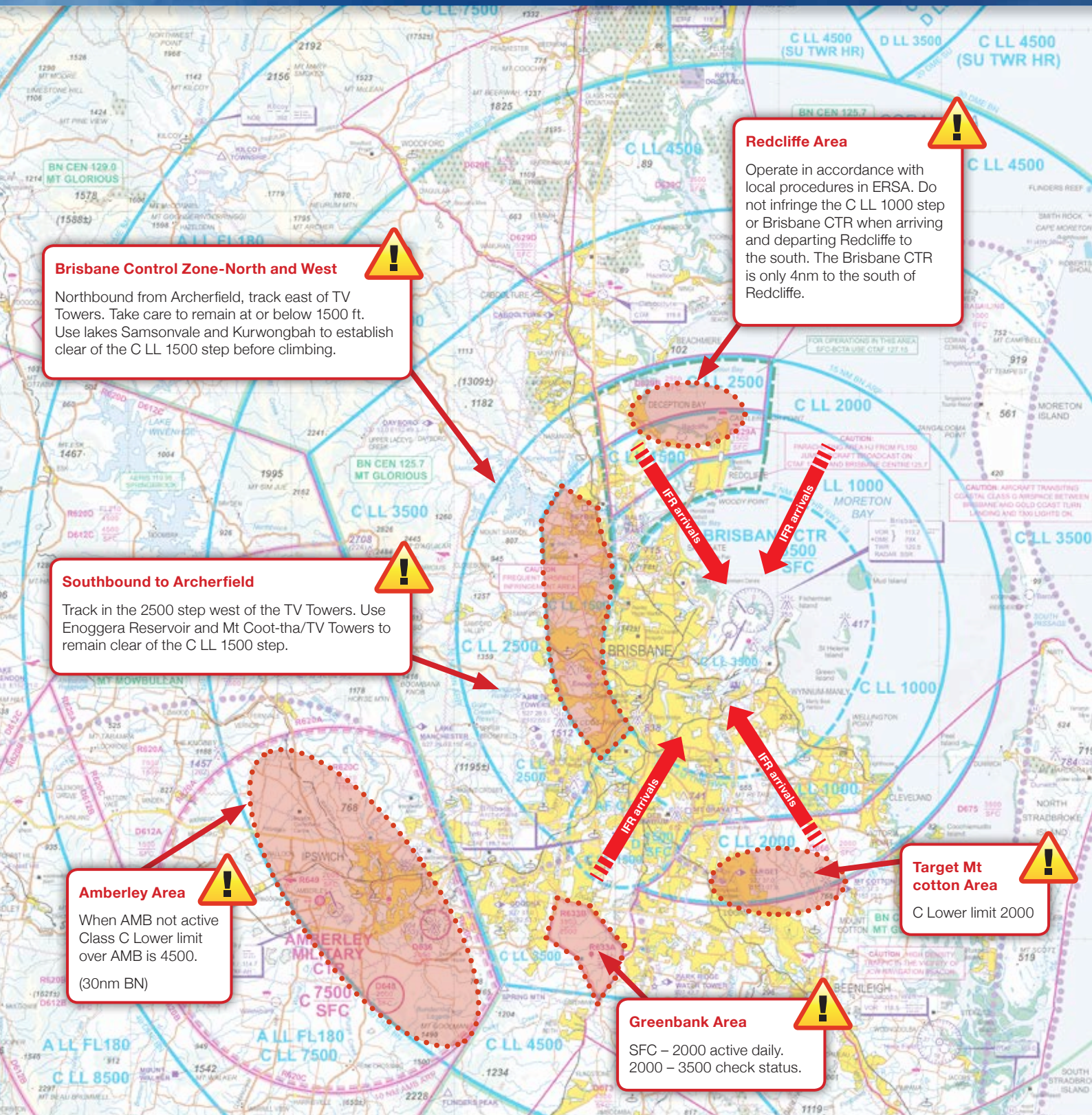


Brisbane Basin

Airspace Infringement Hot Spots



**Monitor Brisbane Centre 125.7 whenever able
Squawk 1200 Mode C**

Not for navigation. This information is current at the time of publication. Please refer to AIP, ERSA and NOTAM for operational information. For more information on this or other Airservices safety publications, please email: safety.promotions@airservicesaustralia.com