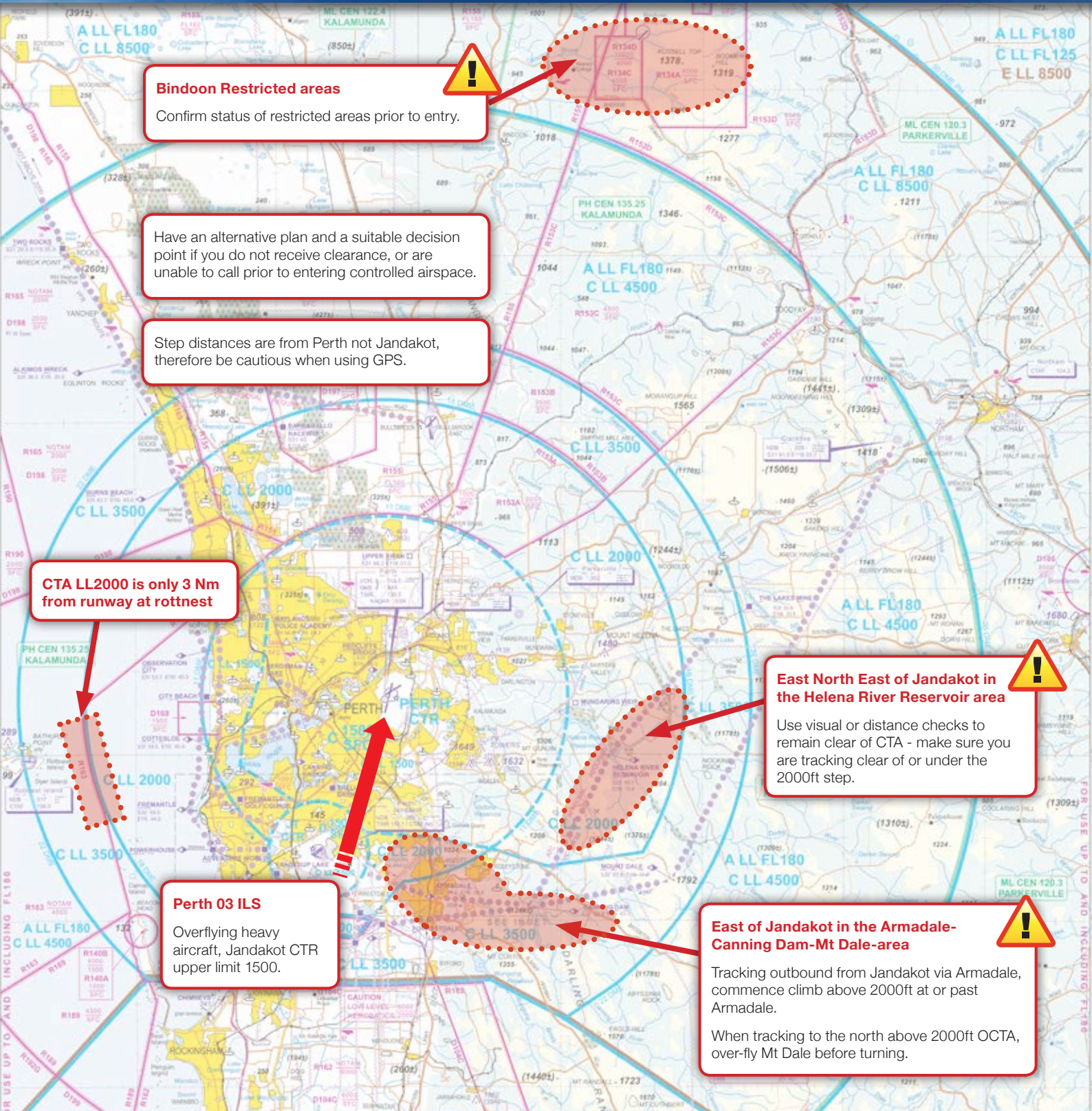


# Perth Basin

## Airspace Infringement Hot Spots



**Bindoon Restricted areas**  
Confirm status of restricted areas prior to entry.

Have an alternative plan and a suitable decision point if you do not receive clearance, or are unable to call prior to entering controlled airspace.

Step distances are from Perth not Jandakot, therefore be cautious when using GPS.

**CTA LL2000 is only 3 Nm from runway at rotnest**

**East North East of Jandakot in the Helena River Reservoir area**  
Use visual or distance checks to remain clear of CTA - make sure you are tracking clear of or under the 2000ft step.

**Perth 03 ILS**  
Overflying heavy aircraft, Jandakot CTR upper limit 1500.

**East of Jandakot in the Armadale-Canning Dam-Mt Dale-area**  
Tracking outbound from Jandakot via Armadale, commence climb above 2000ft at or past Armadale.  
When tracking to the north above 2000ft OCTA, over-fly Mt Dale before turning.

**Monitor Perth Centre 135.25 whenever able  
Squawk 1200 Mode C**

Not for navigation. This information is current at the time of publication. Please refer to AIP, ERSA and NOTAM for operational information. For more information on this or other Airservices safety publications, please email: [safety.promotions@airservicesaustralia.com](mailto:safety.promotions@airservicesaustralia.com)