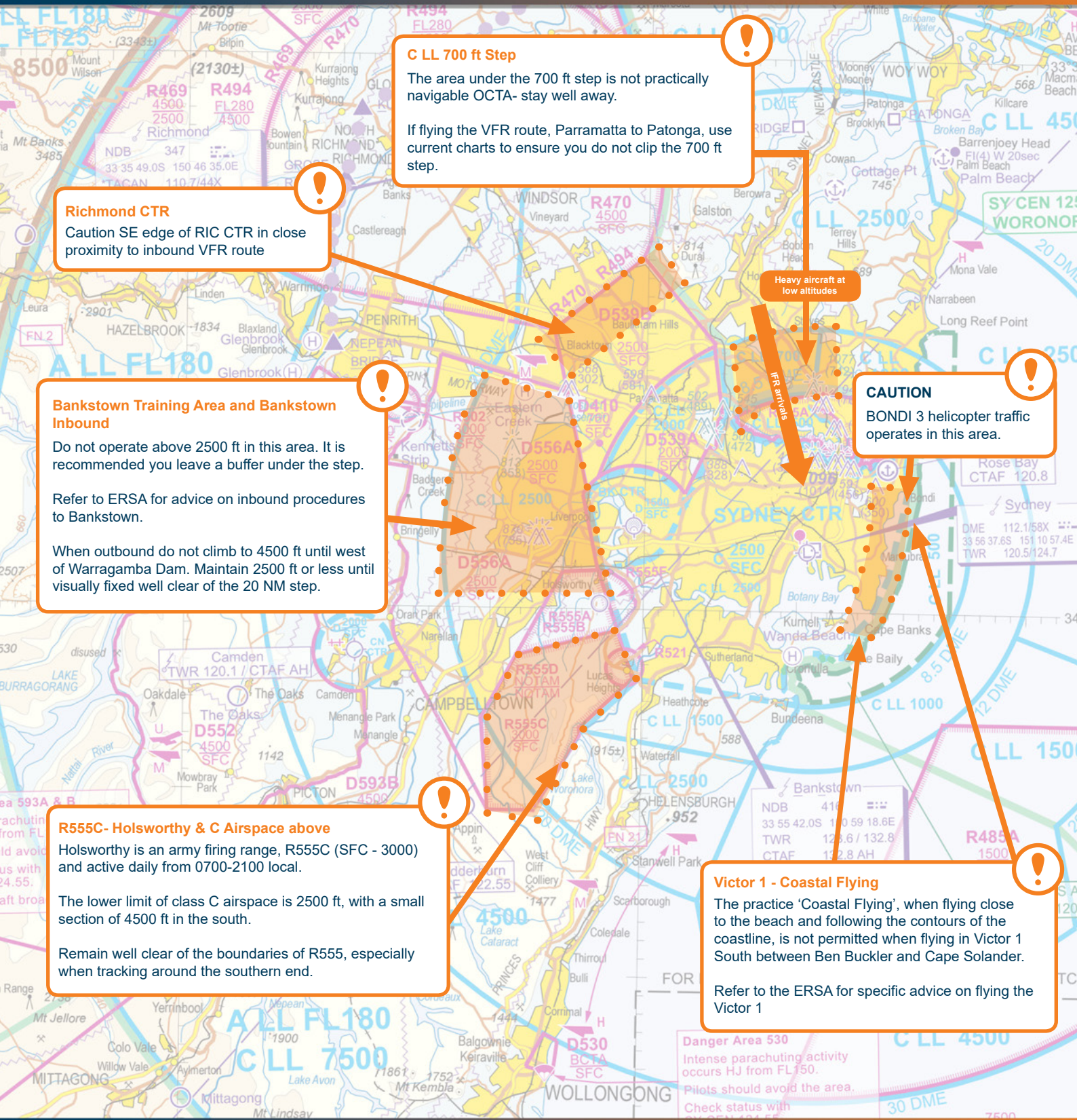


Airspace Infringement Hot Spots



C LL 700 ft Step

The area under the 700 ft step is not practically navigable OCTA- stay well away.

If flying the VFR route, Parramatta to Patonga, use current charts to ensure you do not clip the 700 ft step.

Richmond CTR

Caution SE edge of RIC CTR in close proximity to inbound VFR route

Bankstown Training Area and Bankstown Inbound

Do not operate above 2500 ft in this area. It is recommended you leave a buffer under the step.

Refer to ERSA for advice on inbound procedures to Bankstown.

When outbound do not climb to 4500 ft until west of Warragamba Dam. Maintain 2500 ft or less until visually fixed well clear of the 20 NM step.

R555C- Holsworthy & C Airspace above

Holsworthy is an army firing range, R555C (SFC - 3000) and active daily from 0700-2100 local.

The lower limit of class C airspace is 2500 ft, with a small section of 4500 ft in the south.

Remain well clear of the boundaries of R555, especially when tracking around the southern end.

Victor 1 - Coastal Flying

The practice 'Coastal Flying', when flying close to the beach and following the contours of the coastline, is not permitted when flying in Victor 1 South between Ben Buckler and Cape Solander.

Refer to the ERSA for specific advice on flying the Victor 1



Monitor Sydney Center on 125.8 whenever able Squawk 1200 Mode C